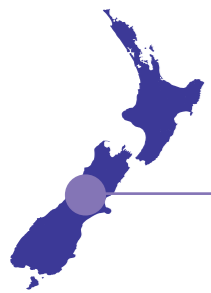
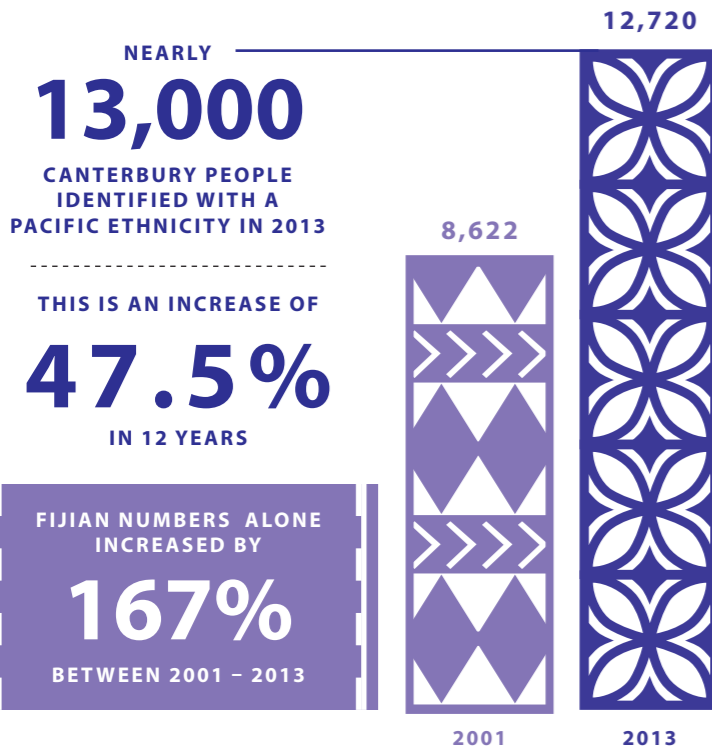


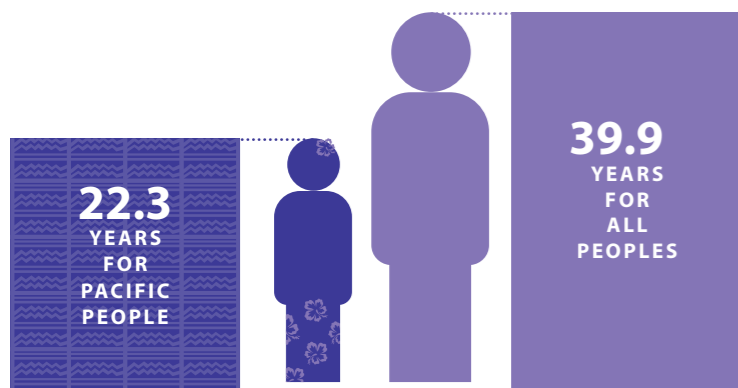
DEMOGRAPHIC OVERVIEW



PACIFIC PEOPLE MADE UP
2.3%
OF THE CANTERBURY
POPULATION COMPARED TO
7% NATIONALLY



THE MEDIAN AGE FOR CANTERBURY'S PACIFIC PEOPLE IS
NEARLY HALF
THE MEDIAN AGE OF ALL CANTERBURY PEOPLE COMBINED



THIS YOUNG POPULATION IS INDICATIVE OF PACIFIC PEOPLE'S SHORTER LIFE SPAN AND PROPORTIONATELY MORE CHILDREN PER FAMILY



EDUCATION



CANTERBURY'S PACIFIC PEOPLE ARE LESS LIKELY TO HAVE
A QUALIFICATION
(NCEA LEVEL 1)
AND
HALF AS LIKELY
TO HAVE A TERTIARY QUALIFICATION IN COMPARISON TO ALL PEOPLE IN CANTERBURY



PACIFIC PEOPLE: **72%** HAVE A QUALIFICATION

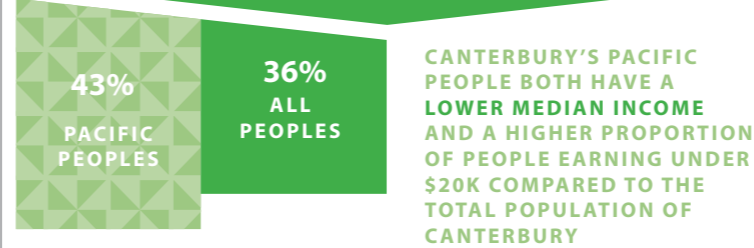
ALL PEOPLE: **78.5%** HAVE A QUALIFICATION

ALL PEOPLE: **18%** HAVE A TERTIARY QUALIFICATION

PACIFIC PEOPLE: **8.3%** HAVE A TERTIARY QUALIFICATION

INCOME AND DEPRIVATION

EARNING BELOW
\$20K



NZ INDEX OF DEPRIVATION



MEDIAN INCOME BY REGION

ALL PEOPLE	\$32,245
PACIFIC PEOPLE	\$25,981

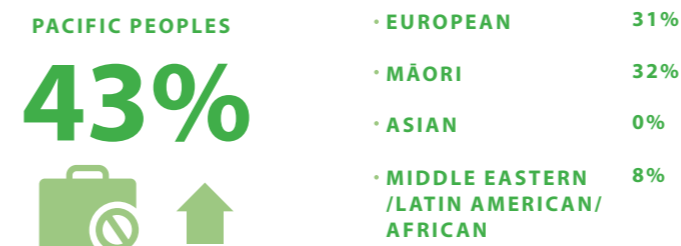
IN 2013, THE RATE OF PACIFIC WOMEN IN FULL-TIME EMPLOYMENT ROSE BY

8%

SINCE 2006 (WHICH IS A SLOWER RATE COMPARED TO WOMEN OF OTHER ETHNIC GROUPS)

MÄORI	12%
EUROPEAN	18%
ASIAN	48%
MIDDLE EASTERN /LATIN AMERICAN/ AFRICAN	59%

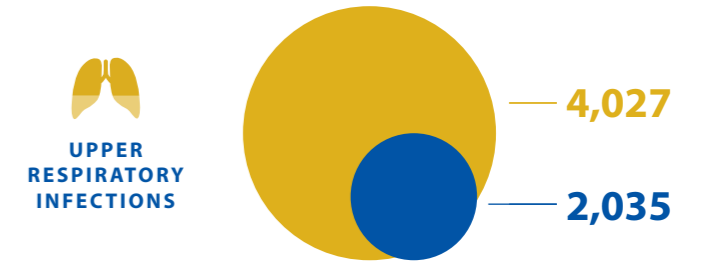
FROM 2006 TO 2013 UNEMPLOYMENT IN CANTERBURY ROSE THE HIGHEST FOR PACIFIC PEOPLE COMPARED TO OTHERS



HEALTH

ASH RATE PER 100,000 POPULATION

● PACIFIC PEOPLE ● TOTAL POPULATION



TOP 5 CONDITIONS — ASH RATE
(AMBULATORY SENSITIVE HOSPITALISATIONS)

CANTERBURY DHB, 00 TO 04 AGE GROUP, 12 MONTHS TO END MARCH 2016. ASH ARE ADMISSIONS TO HOSPITAL THAT MIGHT'VE BEEN AVOIDED BY GOOD PRIMARY CARE

